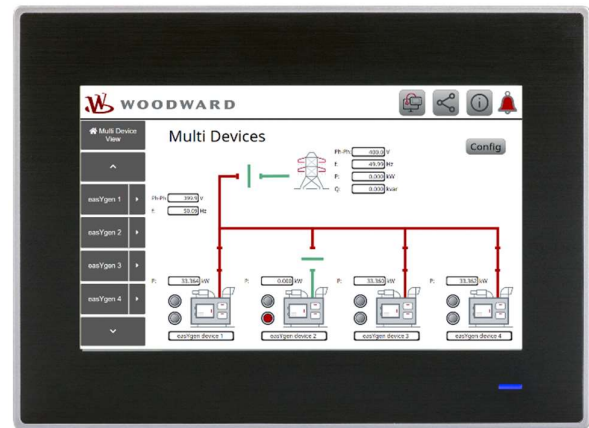
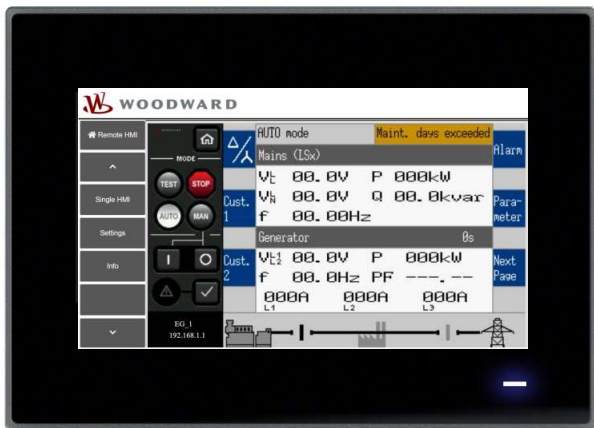


APPLICATION NOTE #B37967_B, 11/2023



easYview

Personalize your easYview Rel. 2.x

Optional Supplementary Information

Alert boxes

The following alert boxes can be used in this publication:



“DANGER” indicates a hazardous situation which, if not avoided, will result in death or serious injury.



“WARNING” indicates a hazardous situation which, if not avoided, could result in death or serious injury.



“CAUTION”, used with the safety alert symbol, indicates a hazardous situation which, if not avoided, could result in minor or moderate injury.



“NOTICE” is used to address practices not related to personal injury.



“IMPORTANT” is used to address practices not related to personal injury.

Personnel



WARNING!
Hazards due to insufficiently qualified personnel!

If unqualified personnel perform work on or with the control unit hazards may arise which can cause serious injury and substantial damage to property.

- **Therefore, all work must only be carried out by appropriately qualified personnel.**

For further Product Support Options, Product Service Options, Returning Equipment for Repair, and/or Engineering Services please [download application note #37573](#).

Documentation itself



Read this entire application note and all other publications pertaining to the work to be performed before installing, operating, or servicing this equipment. Practice all plant and safety instructions and precautions.

Failure to follow instructions can cause personal injury and/or property damage!

Any unauthorized modifications to or use of this equipment outside its specified mechanical, electrical, or other operating limits may cause personal injury and/or property damage, including damage to the equipment.

Any such unauthorized modifications: constitute "misuse" and/or "negligence" within the meaning of the product warranty thereby excluding warranty coverage for any resulting damage and invalidate product certifications or listings.



This publication may have been revised or updated since this copy was produced. If the cover of the publication states "Translation of the Original Instructions", the original source may have been updated since this translation was made.

The latest version of most publications is available on the publications page.

www.woodward.com/publications

If a specific publication is not there, please contact a customer service representative to get the latest copy.

General

This document contains instructions that allow the user to personalize the easYview device, Release 2.x.

There are three areas that can be personalized.

1. A splash screen (start screen) that runs on the display during boot-up (Standard: Woodward logo)



2. A logo that appears in the top left area of the Remote HMI HOME page in One-2-One mode (Standard: Woodward logo)



3. A logo that appears in the top left area of the mini-SCADA pages in Many-2-One mode (Standard: Woodward logo)



Follow the below steps to apply any/all of these personalizations.

Preparation of the pictures

1. Splash screen at bootup

Prepare the boot-up screen as a file:

- It shall be a *.bmp file with 24 bit depth RGB
- Dimensions **must be** 547*108 pixel (width 547, height 108)
- The background should be white

2. Logo for Remote HMI HOME page

Prepare the logo (symbol) picture as a file:

- It shall be a *.png file
- The picture is scaled to fit into the reserved place. The original picture is 1000*732 pixel.

3. Logo for mini-SCADA pages

Prepare the logo picture as a file:


- It shall be a *.png file
- The width to height ratio of the reserved place is 7:1, for example 350*50 pixel.

The original pictures can be found at the product documentation server [[HERE](#)].

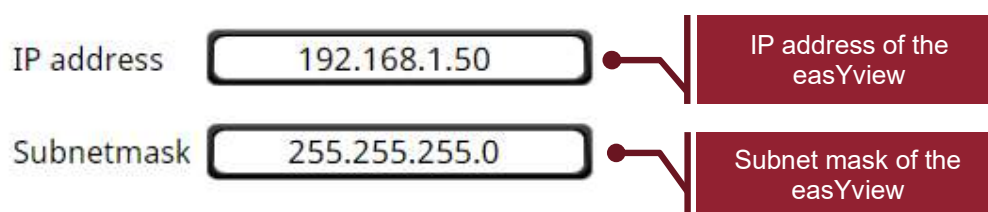
Use the WW_Updater tool

Woodward provides a PC tool (WW_Updater) for updating firmware and transferring your personalization files. WW_Updater can be accessed from www.Woodward.com (search for **10-023-637**) or from product documentation server [[HERE](#)].

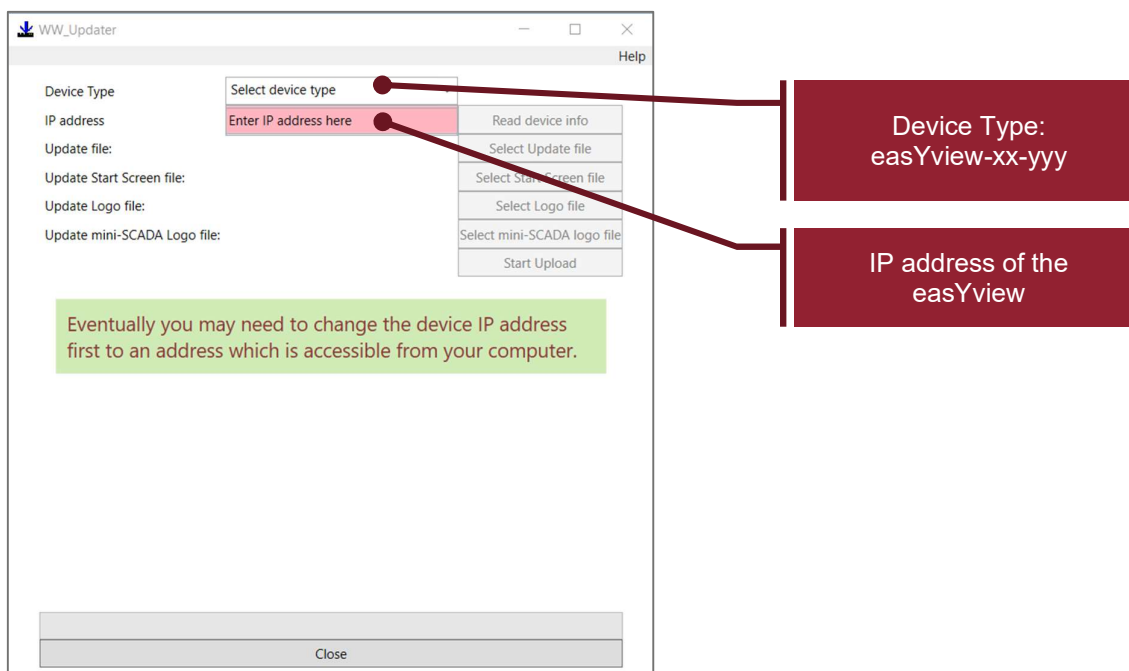
Upload procedure

Set up the network in order to reach the device from the connected PC. Go into the Settings screen using the  button.

Verify that the device's IP address and Subnet Mask are set in a way that the mask is the same as in the PC and that the IP address is different but in the same network. Adjust these values accordingly.



Start the WW_Updater software. The tool appears like below. Select a device type “easYview-xx-yyy” and enter the IP address of the device.



Press “Read device info” to verify that the device is successfully connected and see its status.

Next, select the prepared personalization file,

1. Select Start Screen file
2. Select Logo file
3. Select mini-SCADA logo file

When one or more of these files is selected, the “Start Upload” button gets active. Press this button to upload the selected file(s).

The tool then automatically triggers a restart of the device, and the personalized pictures are available after the boot-up.

NOTICE

This action overwrites the already existing pictures in the device. The original picture can be found at the product documentation server [\[HERE\]](#).

NOTICE

Woodward devices are always delivered with the standard firmware inside unless a specific contract between the two parties exists. The personalization is user’s responsibility and excludes Woodward from any warranty & liability claims arising thereof. Woodward delivers any repaired item with standard firmware. The personalization may be added again by the user.

We appreciate your comments about the content of our publications.

Please send comments to: marketing_PG@woodward.com

Please reference publication 37967.

Homepage

www.woodward.com

**Woodward has company-owned plants, subsidiaries, and branches,
as well as authorized distributors and other authorized service and sales facilities throughout the world.
Complete address / phone / fax / email information for all locations is available on our website.**

THE INFORMATION CONTAINED IN THIS APPLICATION NOTE IS PROVIDED AS IS WITHOUT REPRESENTATIONS OR WARRANTIES OF ANY KIND EXPRESSED OR IMPLIED. THE ADHERENCE TO THE INFORMATION CONTAINED IN THIS APPLICATION NOTE SHALL BE AT THE USER'S OWN RISK. WOODWARD EXPRESSLY DISCLAIMS ANY REPRESENTATIONS OR WARRANTIES CONCERNING WHETHER THE DELIVERABLES, OR SOFTWARE WILL PRODUCE ANY SPECIFIC RESULT OR PERFORM ANY PARTICULAR FUNCTION. WOODWARD FURTHER EXPRESSLY DISCLAIMS ANY LIABILITY FOR DAMAGES, LOSSES, COSTS OR EXPENSES ARISING DIRECTLY OR INDIRECTLY FROM THE USE OF THIS APPLICATION NOTE, UNLESS WOODWARD HAS PROVABLY ACTED WITH WILLFUL MISCONDUCT OR GROSS NEGLIGENCE.

WOODWARD RESERVES THE RIGHT TO UPDATE ANY PORTION OF THIS PUBLICATION AT ANY TIME. INFORMATION PROVIDED BY WOODWARD IS BELIEVED TO BE CORRECT AND RELIABLE. HOWEVER, NO RESPONSIBILITY IS ASSUMED BY WOODWARD UNLESS OTHERWISE EXPRESSLY UNDERTAKEN.